

These instructions include the Friesens.joboptions for Acrobat Distiller.

Acrobat Distiller 5 for Windows:

The file "Friesens.joboptions" should be copied to the following directory:

C:\Program Files\Adobe\Acrobat 5.0\Distillr\Settings

Acrobat Distiller 6 for Windows:

The file "Friesens.joboptions" should be copied to the following directory:

C:\Documents and Settings\All Users\Shared Documents\Adobe PDF 6.0\Settings

Acrobat Distiller 7 for Windows:

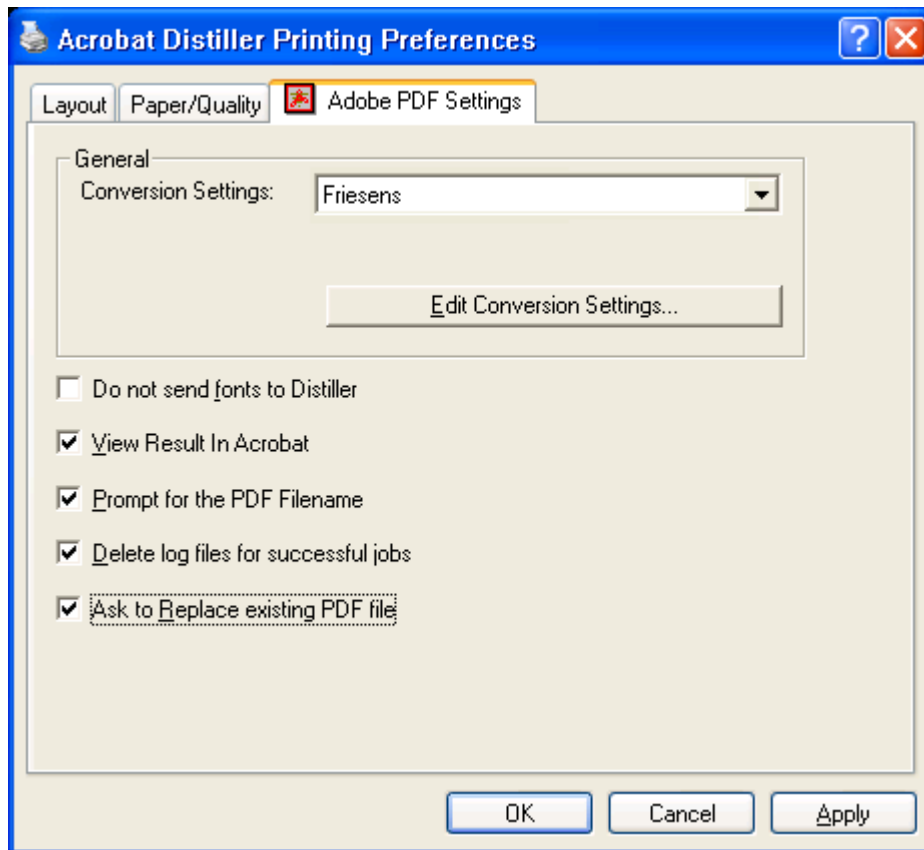
The file "Friesens.joboptions" should be copied to the following directory.

C:\Documents and Settings\All Users\Shared Documents\Adobe PDF\Settings

Once this file is in place, "Friesens" will be available as a job options selection in Distiller.

Acrobat 5 Distiller - Printer Settings

From the Start Menu select Printers and Faxes. Select the Acrobat Distiller Printer. From the menu select File, Printing Preferences...

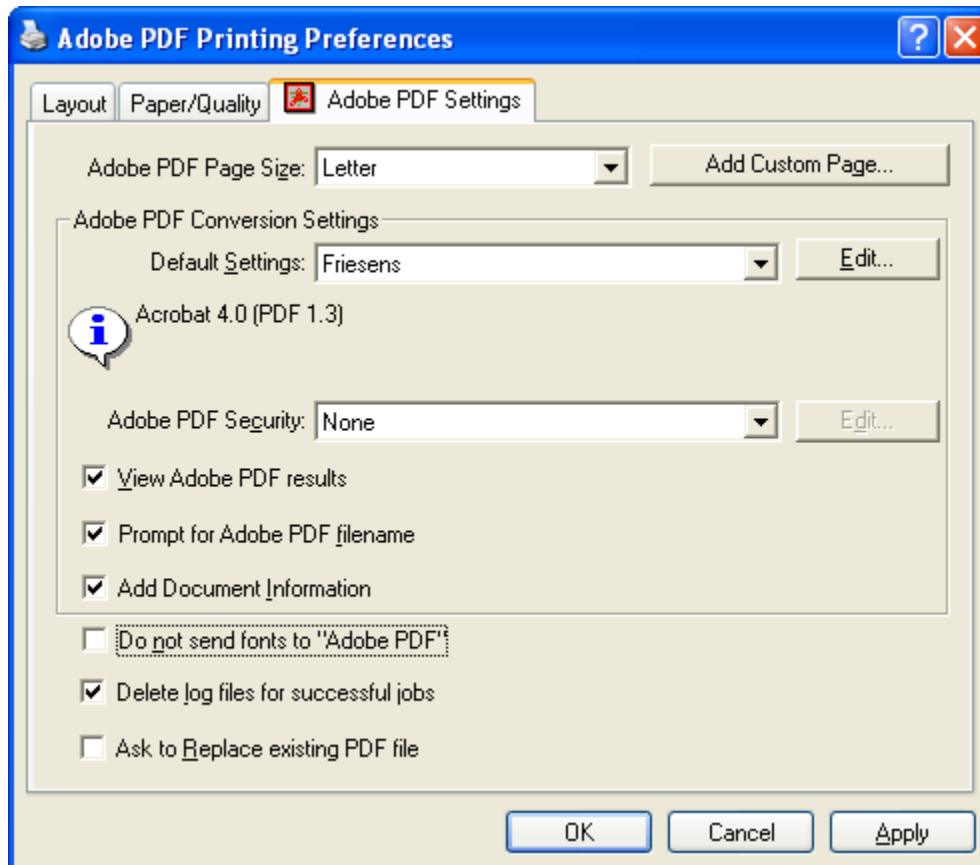


The Conversion Settings need to be set to “Friesens” for the PDF files that are printed to Acrobat Distiller. This will ensure that the resolution is set correctly and all fonts are embedded.

To create a PDF file from Word select Print and choose Acrobat Distiller as the printer.

Acrobat 6 Distiller - Printer Settings

From the Start Menu select Printers and Faxes. Select the Adobe PDF Printer. From the menu select File, Printing Preferences...

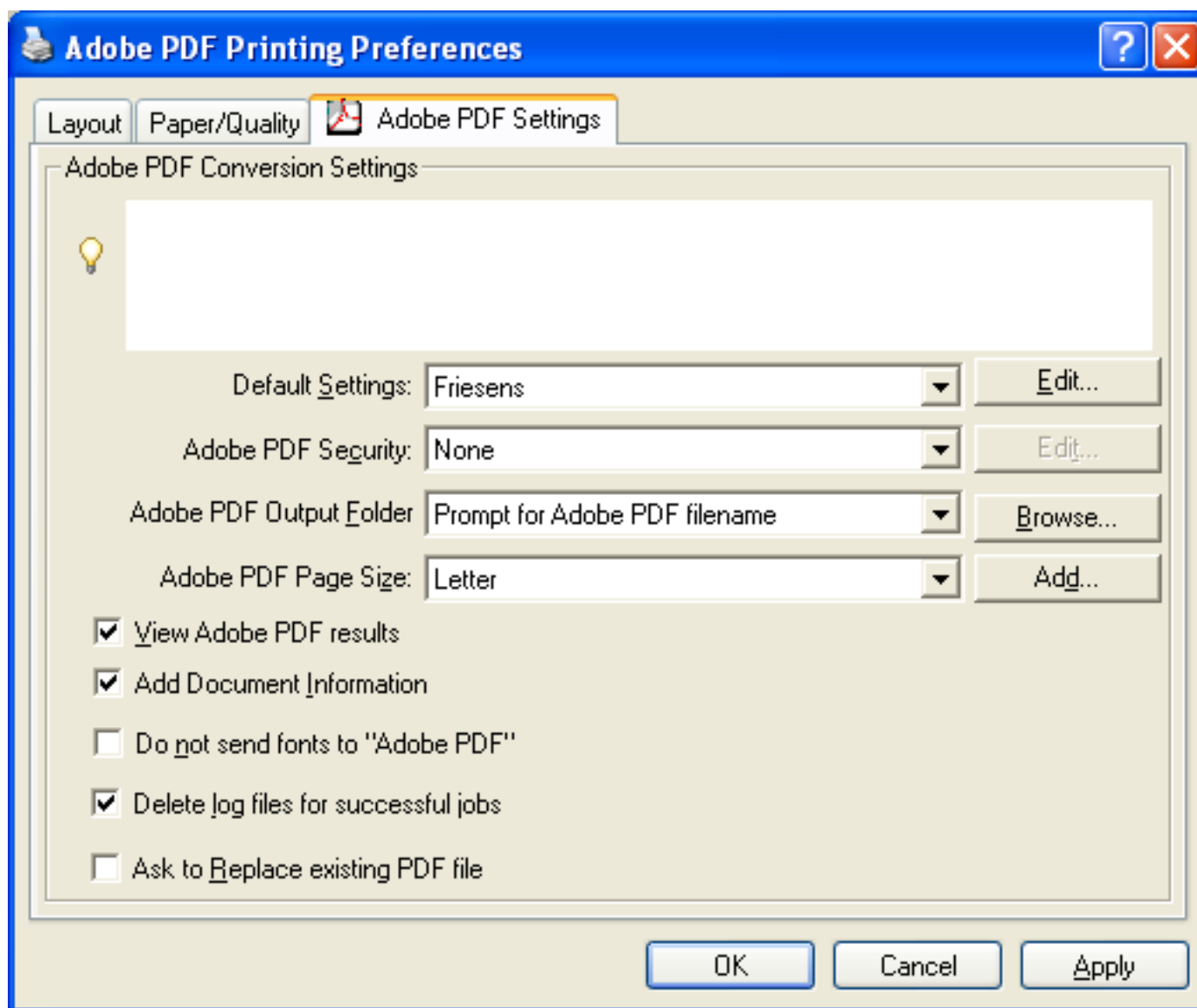


The Conversion Settings need to be set to “Friesens” for the PDF files that are printed to Adobe PDF. This will ensure that the resolution is set correctly and all fonts are embedded.

To create a PDF file from Word select Print and choose Adobe PDF as the printer.

Acrobat 7 Distiller - Printer Settings

From the Start Menu select Printers and Faxes. Select the Adobe PDF Printer. From the menu select File, Printing Preferences...



The Default Settings need to be set to “Friesens” for the PDF files that are printed to Adobe PDF. This will ensure that the resolution is set correctly and all fonts are embedded.

To create a PDF file from Word select Print and choose Adobe PDF as the printer.

Prinergy Geometry Editor

The Prinergy Geometry Editor is an Acrobat Plug-In which is used to set the trim box in the PDF. The trim box is a hidden element that gets inserted into the PDF to indicate exactly where the book should be trimmed. This allows our workflow to recognize the correct trim size and trim location.

Installing the Geometry Editor Plug-In

Adobe Acrobat 5 for Windows:

The file "Geometry.api" should be copied to the following directory:

C:\Program Files\Adobe\Acrobat 5.0\Plug_ins

The file "Geometry.pdf" should be copied to the following directory:

C:\Program Files\Adobe\Acrobat 5.0\Plug_ins\Help\ENU

Note: The Help and ENU folders may need to be created.

Adobe Acrobat 6 for Windows:

The file "Geometry.api" should be copied to the following directory:

C:\Program Files\Adobe\Acrobat 6.0\Acrobat\plug_ins

The file "Geometry.pdf" should be copied to the following directory:

C:\Program Files\Adobe\Acrobat 6.0\Acrobat\plug_ins\Help\ENU

Note: The Help and ENU folders may need to be created.

Adobe Acrobat 7 for Windows:

The file "Geometry.api" should be copied to the following directory:

C:\Program Files\Adobe\Acrobat 7.0\Acrobat\plug_ins

The file "Geometry.pdf" should be copied to the following directory:

C:\Program Files\Adobe\Acrobat 7.0\Acrobat\plug_ins\Help\ENU

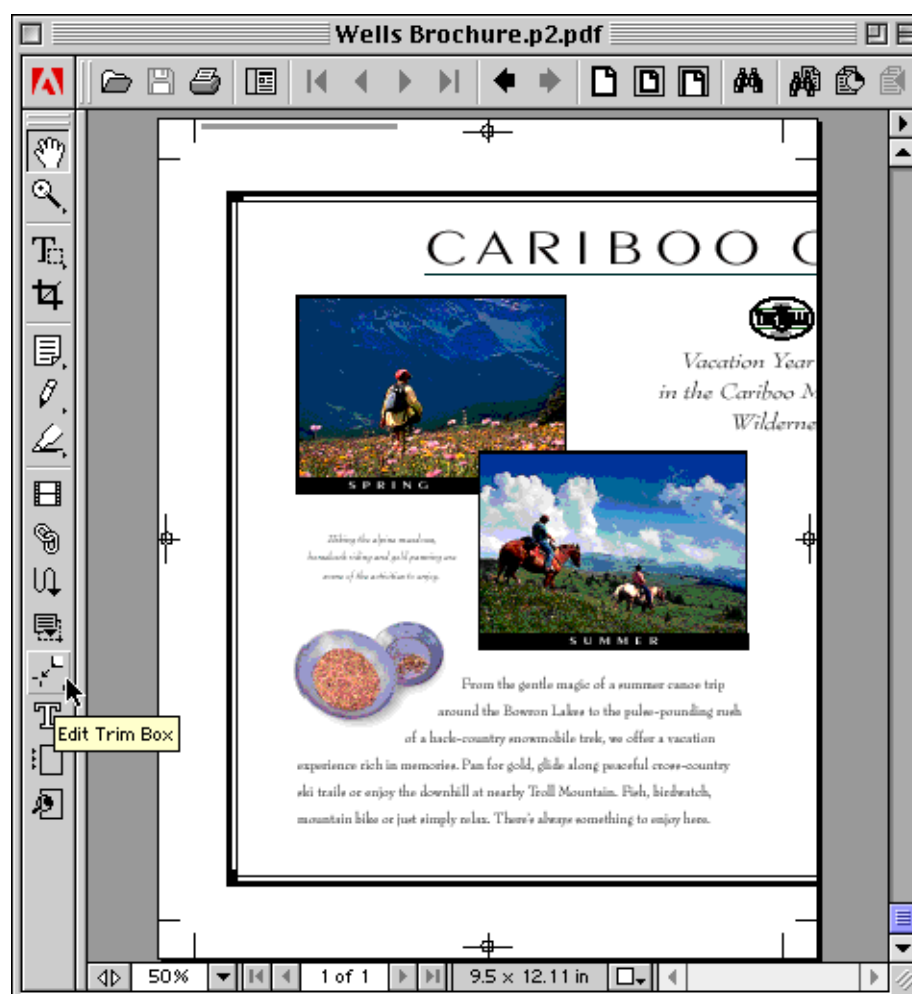
Note: The Help and ENU folders may need to be created.

Restart Acrobat to make this plug-in available.

Open the PDF file you want to adjust.

Click the Edit Trim Box tool

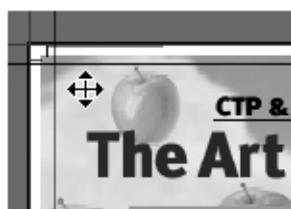
Note: The Edit Trim Box tool will only be available when the document is in single page mode.



Editing the trim box

Edit the trim box by entering values for the X Offset, Y Offset, Width and Height. Blue lines will highlight the trim box.

The trim box can also be adjusted using the mouse.



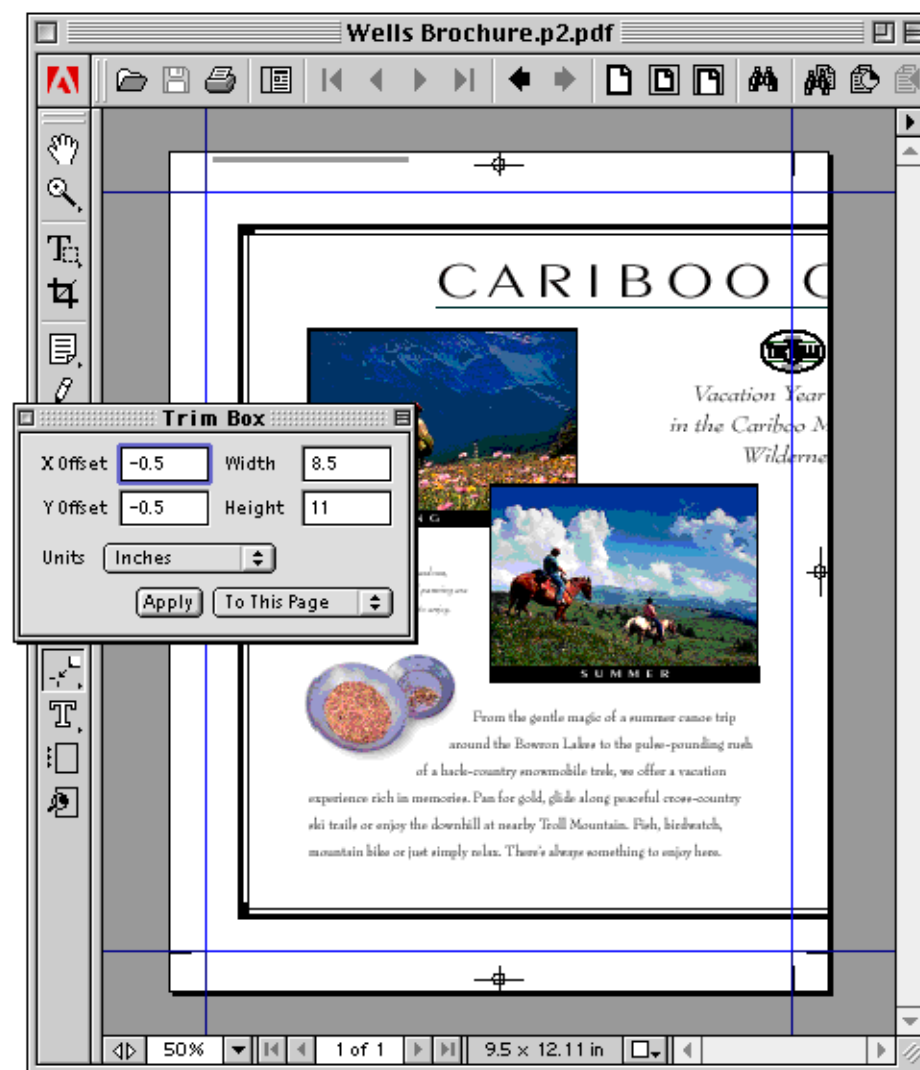
Move the entire trim box by clicking and dragging inside the trim box area.



Move two sides of the trim box by clicking and dragging where the lines intersect.



Move one side of the trim box by clicking and dragging a single line.



The trim box settings can be applied to a single page, odd pages, even pages or all pages. Make sure all pages are set correctly before saving the PDF.

Once the Width and Height have been adjusted to match the trim size of your book and the trim box is correctly positioned on every page save the PDF file.